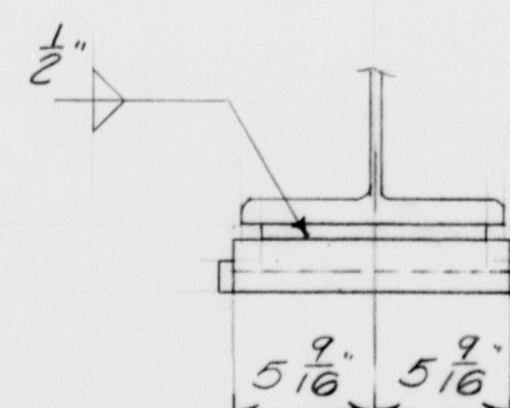
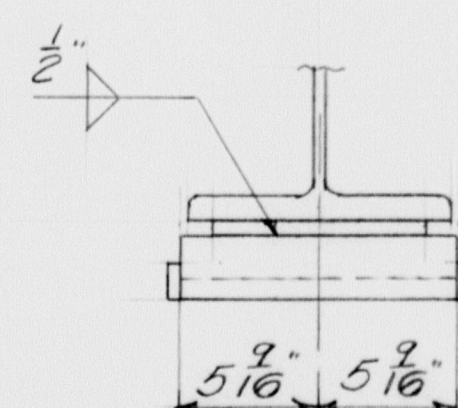
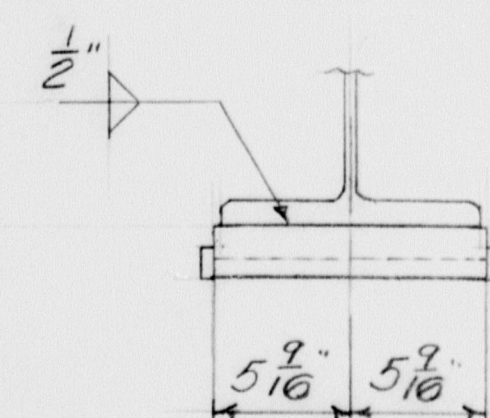


STRINGER SPLICE DETAILS

SPRINGS - SPLT

SPLICE NOTES:-
Subpunch or drill holes $\frac{11}{16}\phi$. Ream assembled (per Drwg. 8-411-53)
to $\frac{15}{16}\phi$ or drill from solid. Match mark all loose material.

Holes are for High Strength bolts. They are to be free from burrs and there shall be no paint on any surface within 3" of such open holes.



NOTE:-
See Drwg. 8-411-51 & 52 for p5 & p9

NOTES:-
No paint on p1 & p2
No paint on top edges of top flange
of Stringers (51 to 515 inc)
See Drwg 8-411-55 for additional details

SHIP		BILL OF MATERIAL				DWG. NO. 3411-54	
MARK	NO.	MARK	SHAPE	LENGTH	WT.	WT. DEDUCTION	REMARKS
51	1		30WF108	56 3 1/2		24	
52	1		30WF124	102 1		8	
53	1		30WF132	68 3 3/4		23	
54	1		30WF124	56 1 1/2		28	
55	1		do	102 1		8	
56	1		do	68 6 3/4		21	
57	1		do	56 1 1/2		28	
58	1		do	102 1		8	
59	1		do	68 6 3/4		23	
510	1		do	56 1 1/2		28	
511	1		do	102 1		8	
512	1		do	68 6 3/4		23	
513	1		30WF108	56 3 1/2		24	
514	1		30WF124	102 1		8	
515	1		30WF132	68 8 13/16		25	
	4	PD	#10 x 7/16	2 1			
	16	PB	#10 x 7/16	2 7			
	2	PG	#10 x 5/16	1 6			
	2	PH	#10 x 3/8	1 3			
	20	PC	#19 x 7/16	2 0			
	8	PD	FB 4 x 2	2 1			
	32	PE	FB 4 x 1 1/2	2 7			
	8	PF	FB 4 x 1 1/2	1 0			
	4	CP1	FB 8 x 3 1/2	13 0		68	
	4	CP2	#9 x 1/2	14 0		85	
	4	CP3	#9 x 1/2	13 0		68	
	6	CP4	FB 8 x 2 1/2	13 6		82	
	12	CP5	#9 x 3/4	17 0		307	
	12	CP6	FB 8 x 2 1/2	31 6		164	
	6	CP7	#9 x 3/4	32 6		127	
D1	2		12L20.7	7 3 1/2		2	
D1A	1		do	7 3 1/4		1	
D1B	1		do	7 3 1/2		1	
D1C	1		do	7 3 1/2		1	
D1D	1		do	7 3 1/2		1	
D1E	2		do	7 3 1/2		2	
D2	32		15L33.9	7 0 3/4			
D5	4		18L42.7	7 3 3/4		11	
D5A	2		do	7 3 1/2		5	
D5B	2		do	7 3 1/2		4	
D5C	2		do	7 3 1/4		4	
D5D	2		do	7 3 3/4		4	
	8	PH	FB 4 x 1/2	1 3			

This Bill of Mat'l is con't. on 55. It covers Drwg's 8-411-53 to 511 inc

SHOP CONNECTIONS: *Welded*
FIELD CONNECTIONS: *3" 4.5 Strength Bolts*
HOLES: *1 1/2"*
PAINT: *Red Lead unless noted*

FIELD CONNECTIONS: 3" Hi-Strength Bolts

HOLES: 15" ϕ

PAINT: Red Lead unless noted

TYPICAL DETAILS

Bancroft & Martin Rolling Mills Company
South Portland 7, Maine

DEPOT ROAD OVER INTERSTATE
FALMOUTH, ME.

CUSTOMER *E. C. SNODGRASS*

CUSTOMER L. S. O'NEAL
DESIGNER M. S. H. C.

ORDER NO. _____	DWG. NO. <u>8-411-5.4</u>
-----------------	---------------------------

DRAWN	1216-58	P.L.
REVISION	1-21-59	P.L.
REVISION		
REVISION		

REVISION	1-21-59	P.L.
----------	---------	------

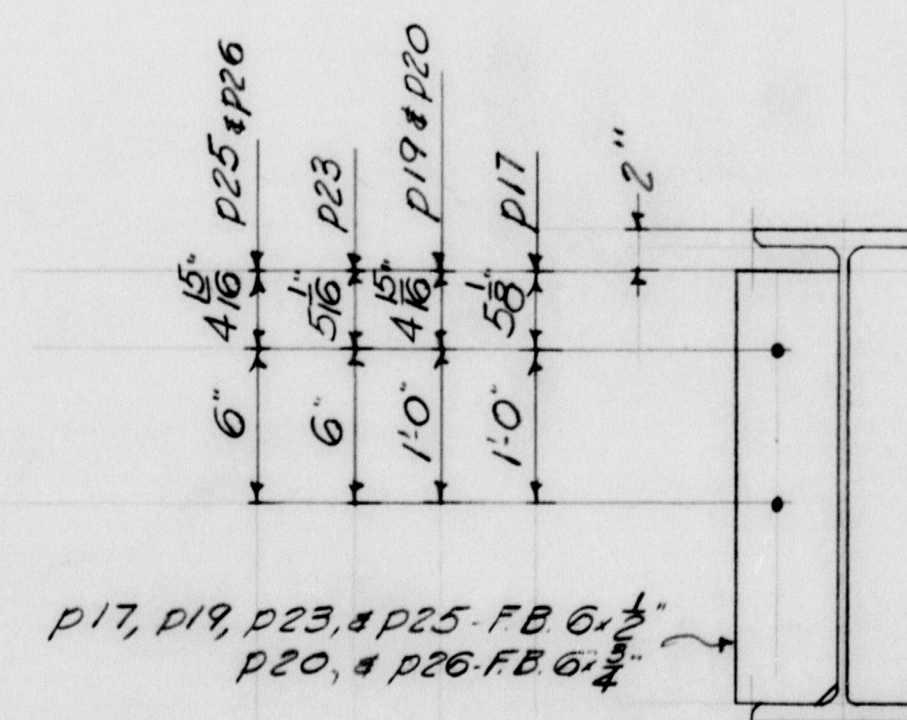
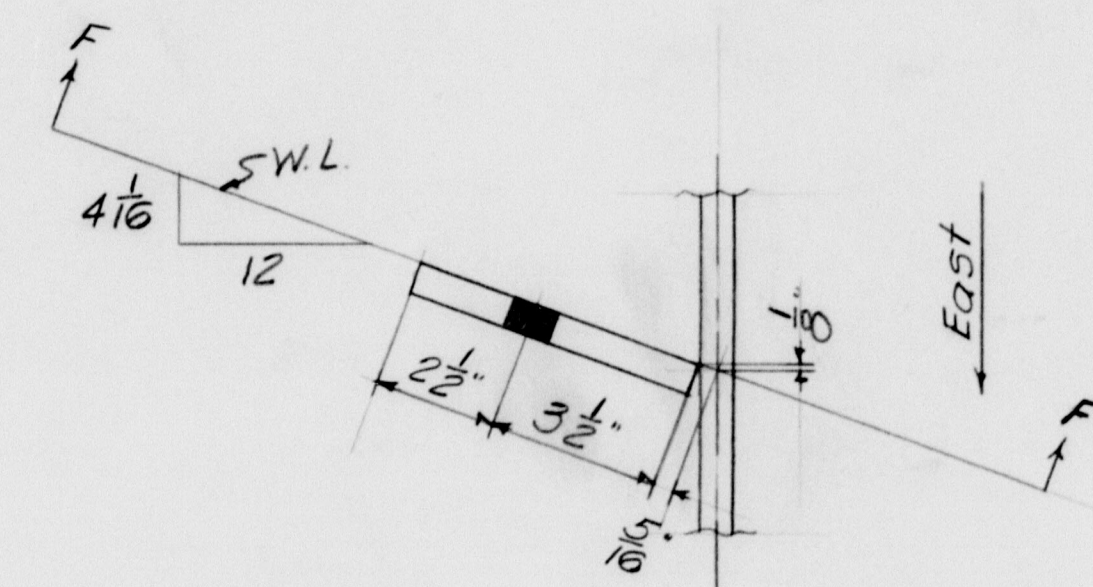
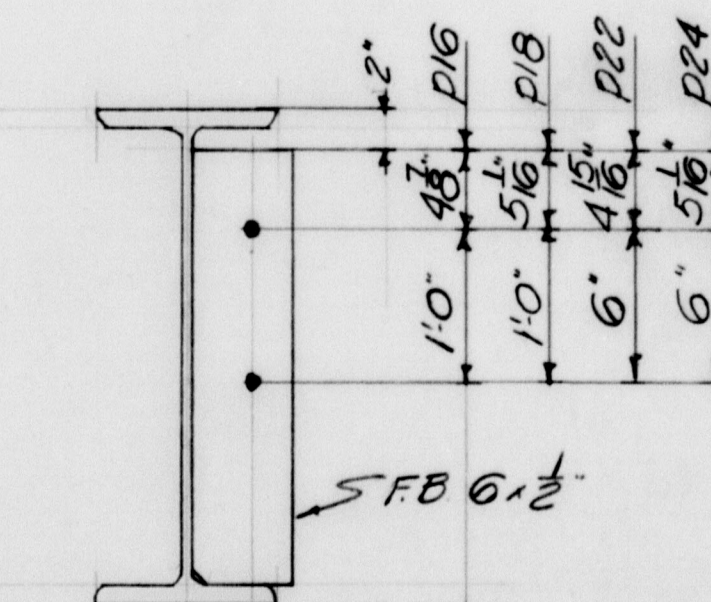
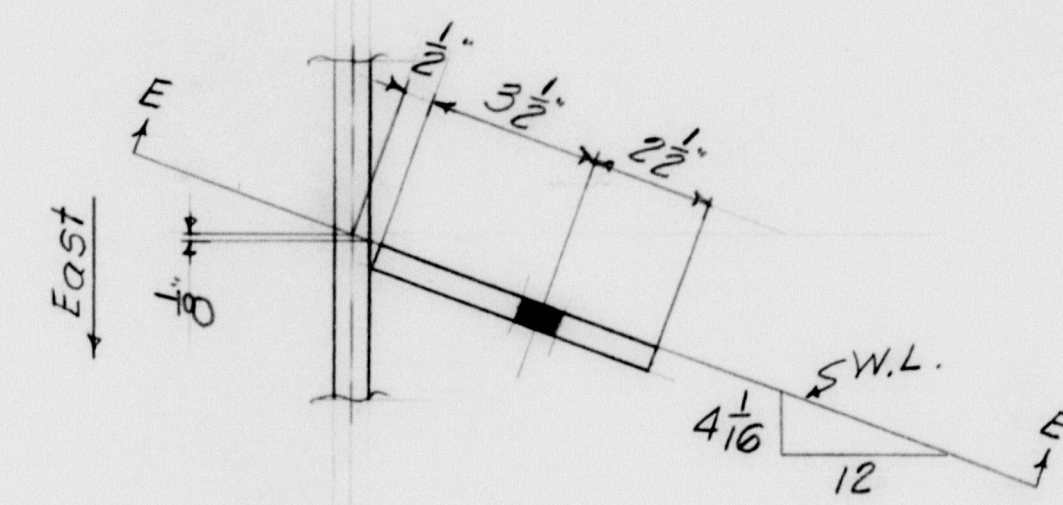
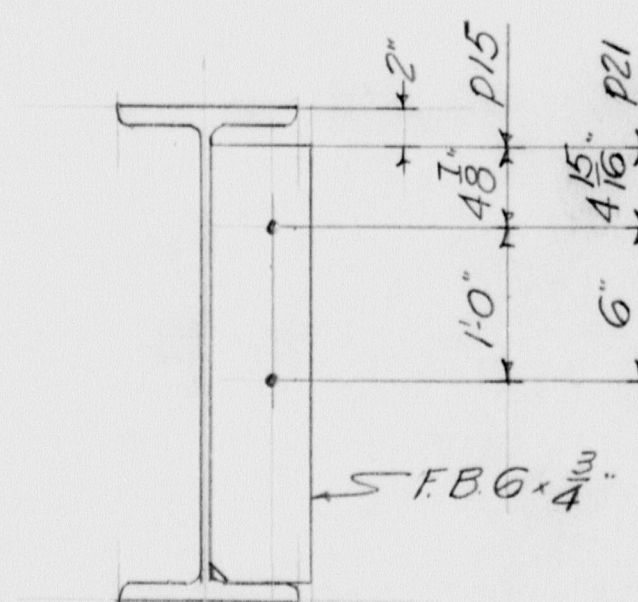
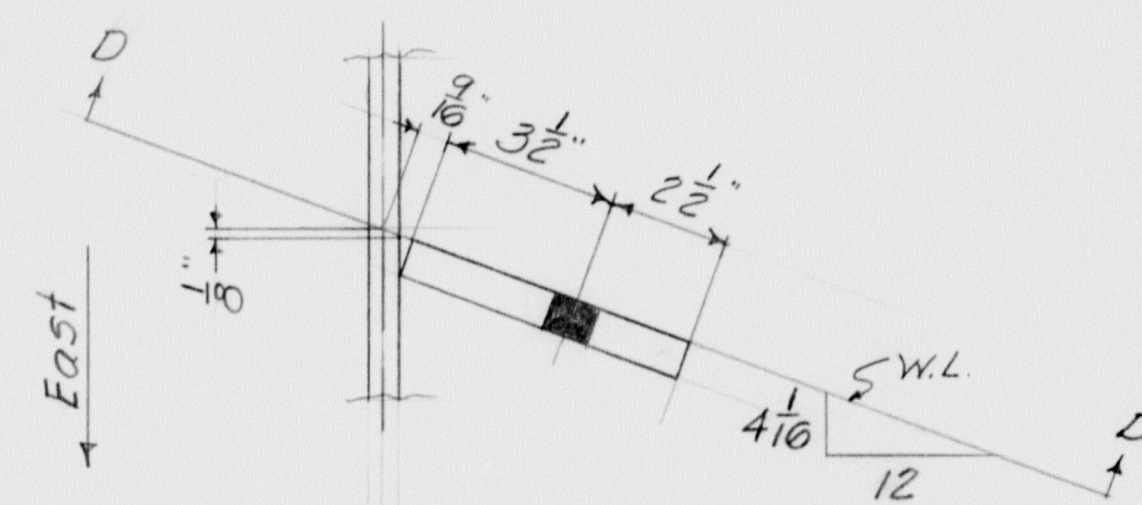
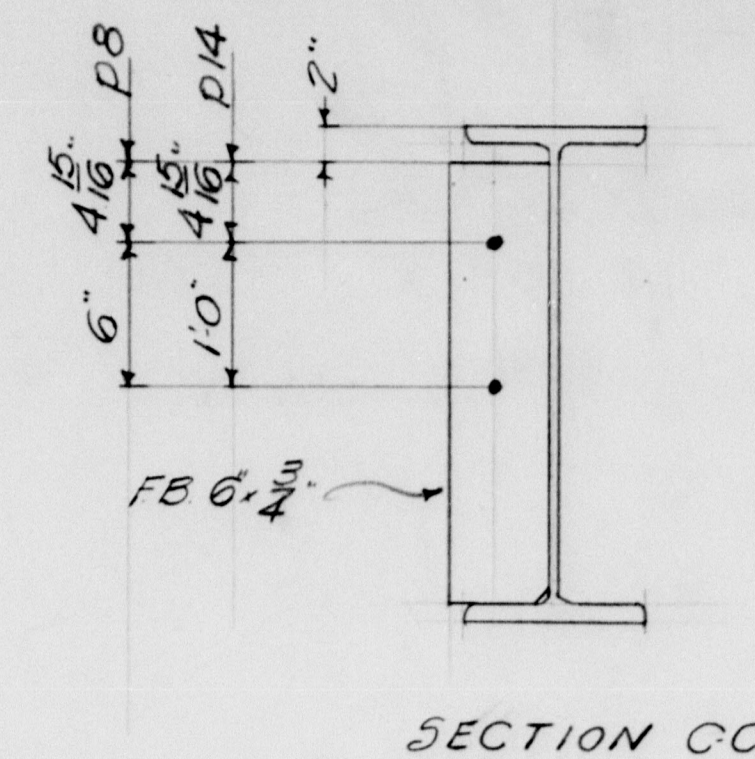
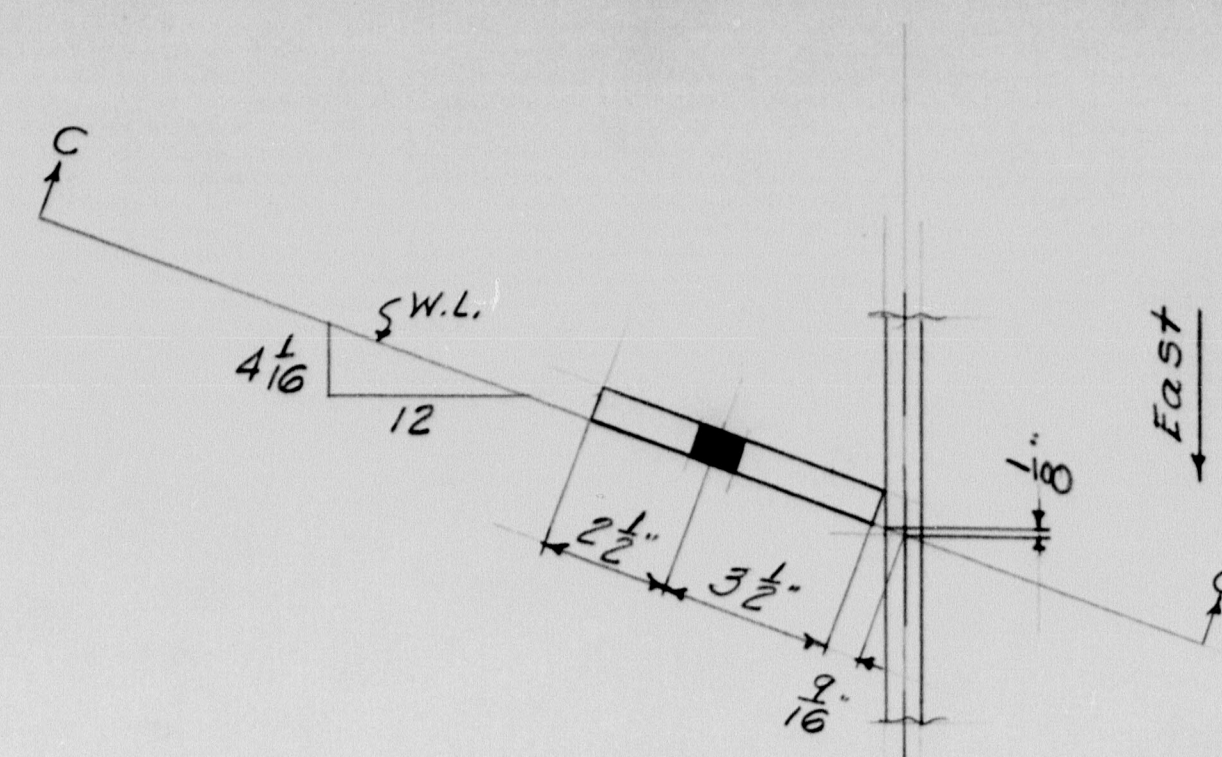
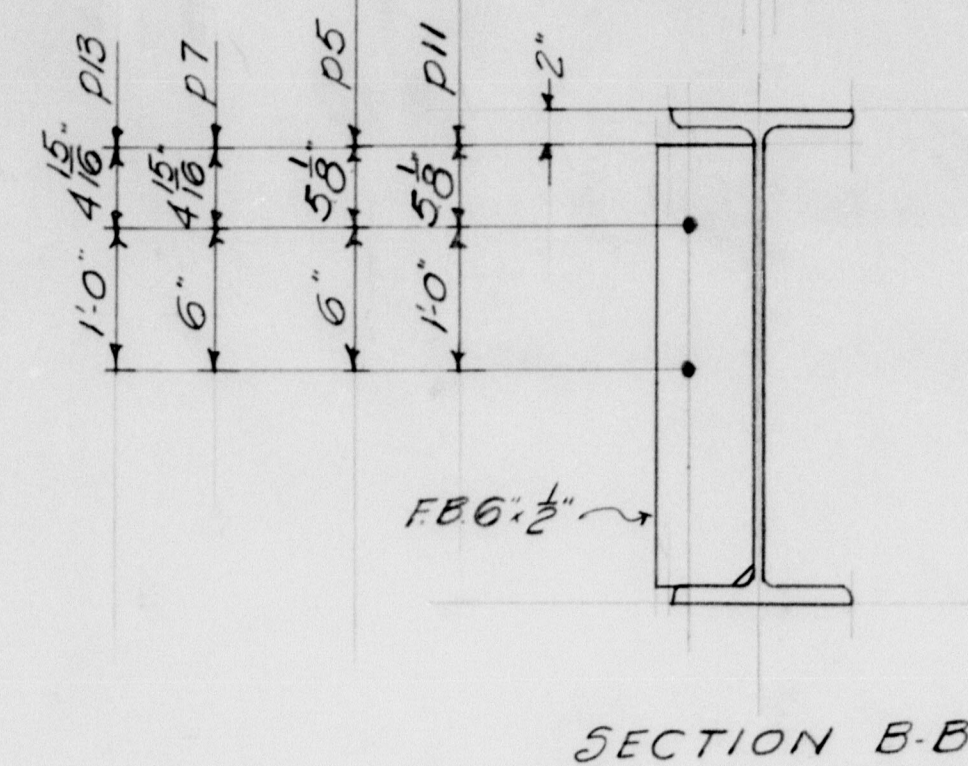
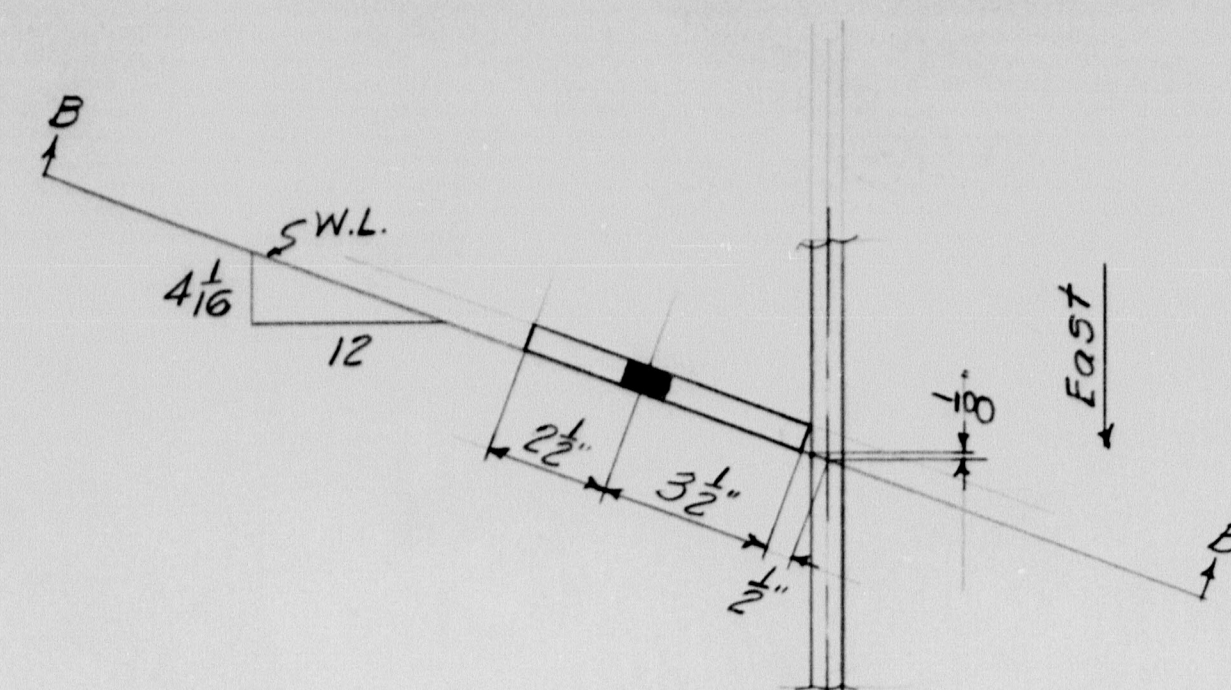
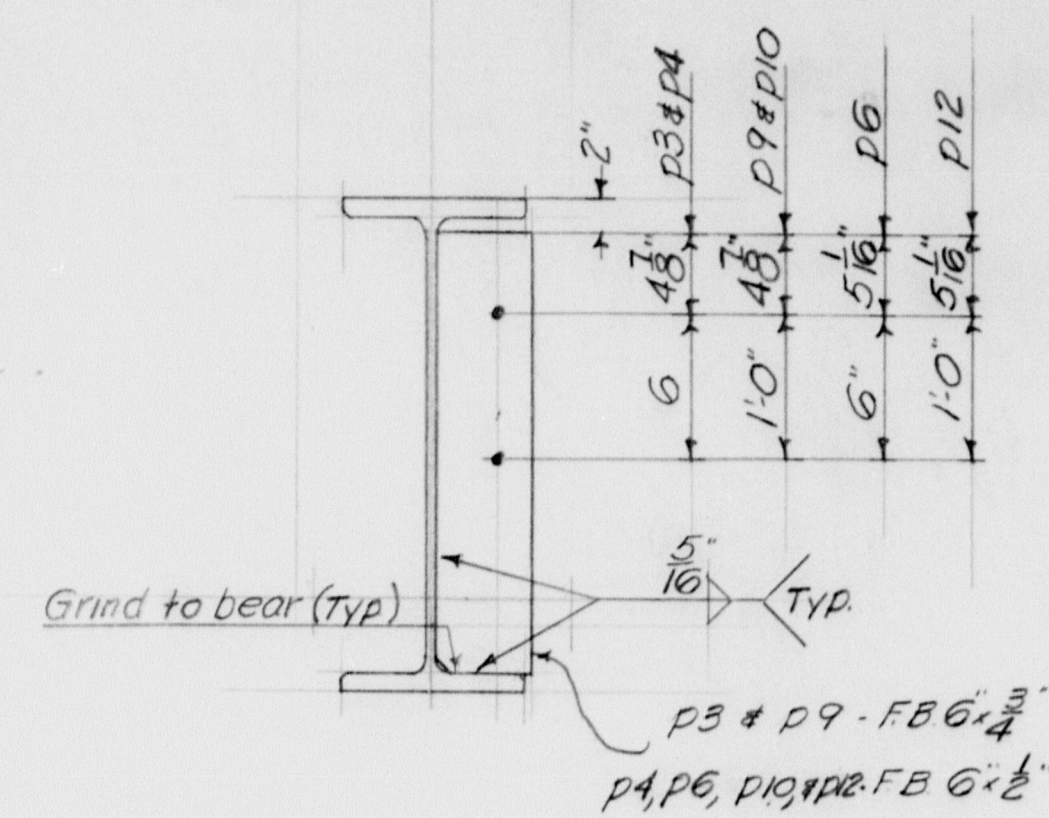
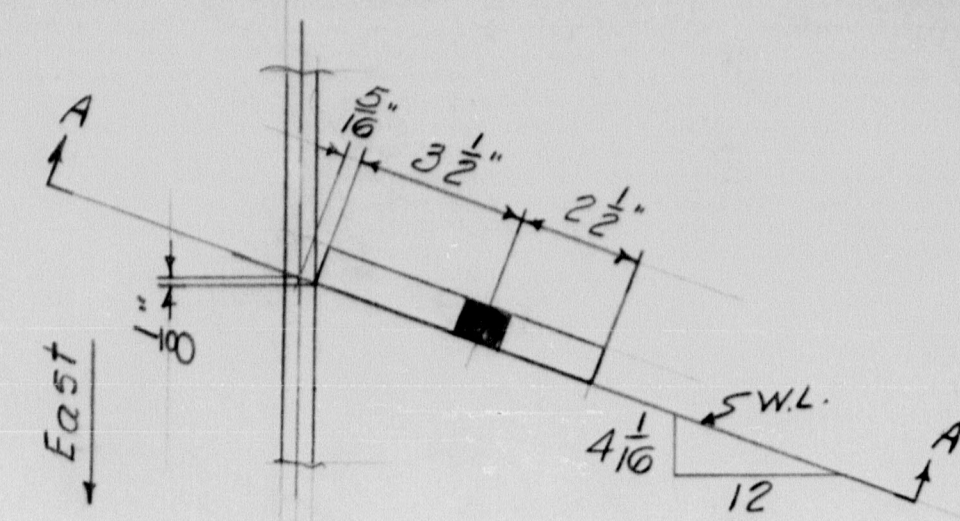
REVISION		
----------	--	--

REVISION		
----------	--	--

APP 1-23-59

ch kd

73-69



NOTE:-
NO paint on p3 to p26 inc.

[illegible]

SHOP CONNECTIONS: *Welded*
FIELD CONNECTIONS: *30 Hi-Strength Bolts*
HOLES: *15.0*
PAINT: *Red Lead unless noted*

100 114 50

TYPICAL DETAILS	
Bancroft & Martin Rolling Mills Company South Portland 7, Maine	
DEPOT ROAD OVER INTERSTATE FALMOUTH, ME.	
CUSTOMER	E. C. SNODGRASS
DESIGNER	M. S. H. C.
ORDER NO.	8-411-55

DRAWN	12.17.58	P.L.
REVISION		
REVISION		
REVISION		

